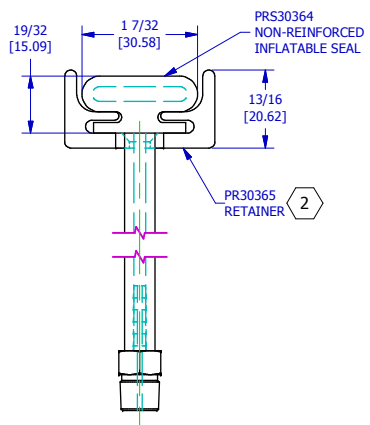
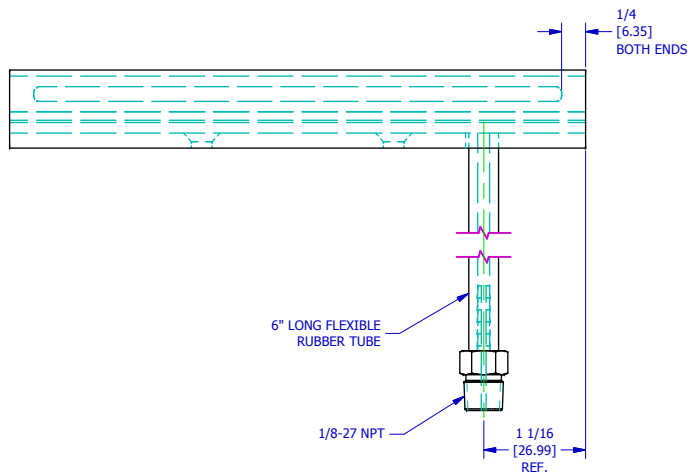
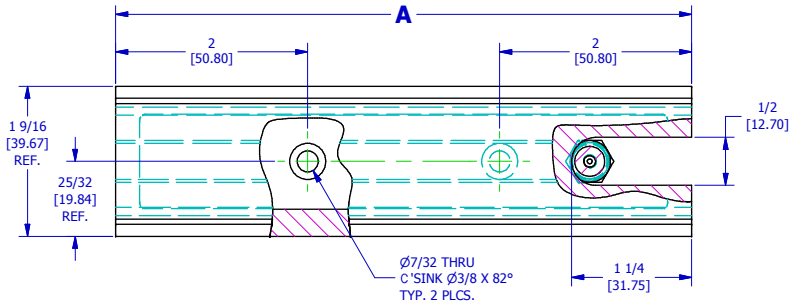
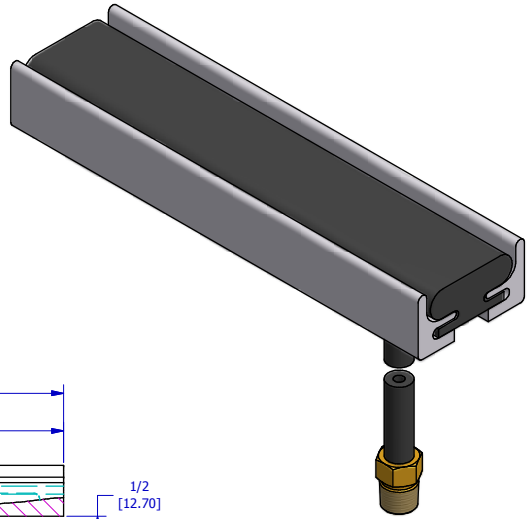


PART NO	"A"
PRS30364-1	6" [152.4 mm]
PRS30364-2	9" [228.6 mm]
PRS30364-3	12" [304.8 mm]

REVISIONS						
DATE	REV.	SHT.	DESCRIPTION	DR.	CHK.	APVD.
05/27/04	A	1	MADE CHGS PER ECR # 23145	AM	MKP	AJC
01/19/07	B	ALL	REDRAWN IN INVENTOR; ADDED SHEETS 2 & 3	MJR	MKP	AJC
7/13/09	C	1	REVISED PER ECR # 32881	MJR		



PRS30364	C
SHEET NO. 1 of 1	REV

- NOTES:
- 1 SEAL MATERIAL TO BE EPDM PAWLING COMPOUND E603.
 - 2 SEE DWG PR30365 FOR RETAINER DETAILS
 3. MAX OPERATING PRESSURE = 25 PSI (1.7 BAR)

THIS DESIGN IS THE PROPERTY OF THE PAWLING CORPORATION AND IS SUBMITTED IN CONFIDENCE. ALL RIGHTS RESERVED. COPYING OR IMITATION EXPRESSLY PROHIBITED. ALL OR PORTIONS OF THIS DESIGN MAY BE SUBJECT TO PROPRIETARY RIGHTS. DRAWING NOT RELEASED UNTIL DATED AND APP'D BELOW		MATERIAL PAINT/FINISH TOLERANCE UNLESS NOTES FRACTIONS ± 1/32 3 DECIMAL PLACES ± .010 2 DECIMAL PLACES ± .030 ANGLES ± 2°		SCALE 1/1 & NOTED		PAWLING CORP. ENGINEERED PRODUCTS DIVISION TITLE PNEUMA-CEL	
DATE 4/6/2004 BREAK ALL SHARP CORNERS 1/32 DO NOT SCALE DRAWING	APVD AJC © PAWLING CORP	MATERIAL 1		TITLE PRS30364		DR. 2/4/2004 AM CHK. 4/5/2004 MKP APVD. 4/6/2004 AJC	