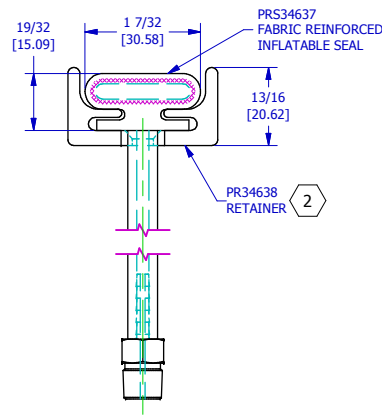
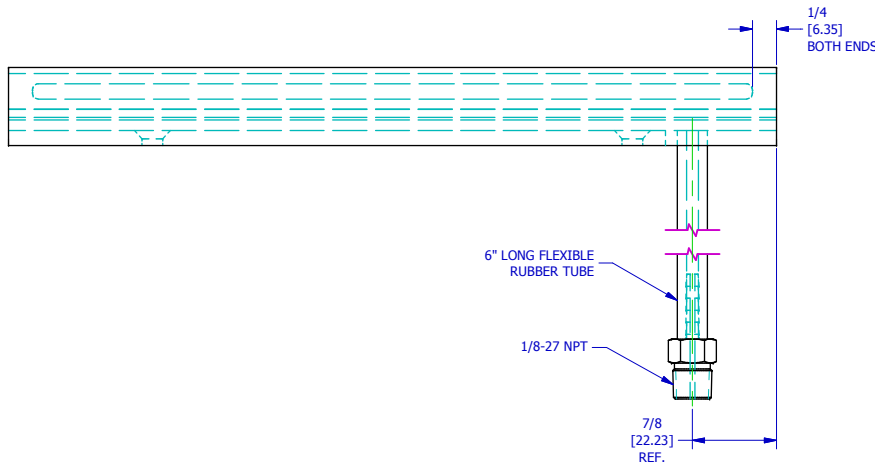
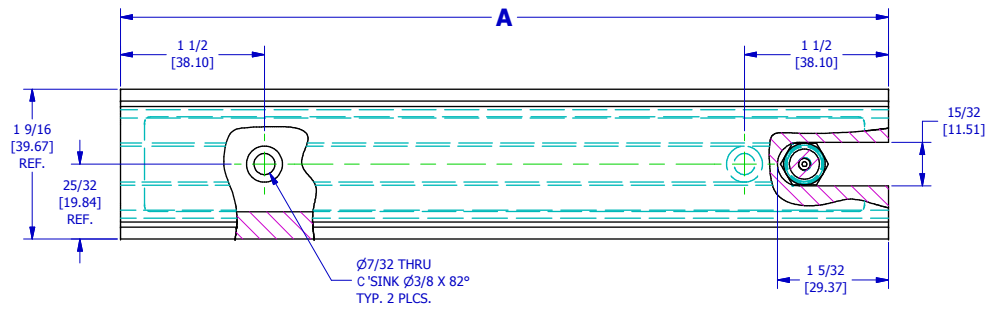
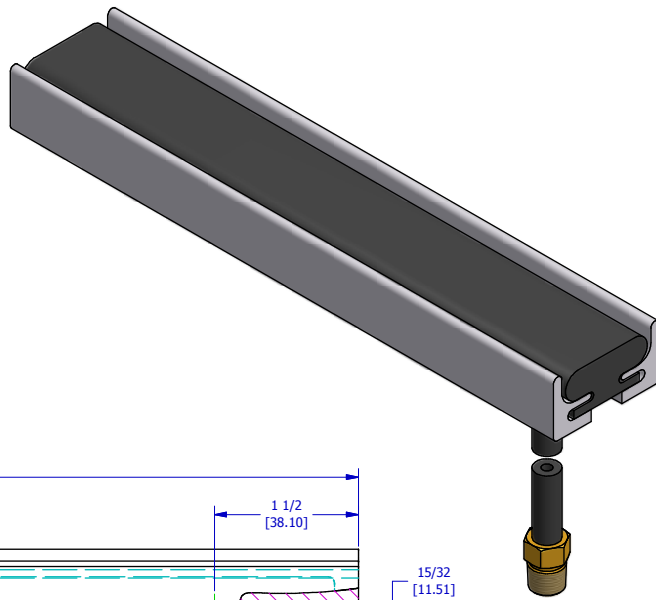


PART NO	"A"
PRS34637-1	8" [203.2 mm]

REVISIONS						
DATE	REV.	SHT.	DESCRIPTION	DR.	CHK.	APVD.



PRS34637	-
SHEET NO. 1	of 1
	REV

- NOTES:
- 1 SEAL MATERIAL TO BE FABRIC REINFORCED EPDM PAWLING COMPOUND E603
 - 2 SEE DWG PR34638 FOR RETAINER DETAILS
 - 3. MAX OPERATING PRESSURE = 35 PSI (2.4 BAR)

THIS DESIGN IS THE PROPERTY OF THE PAWLING CORPORATION AND IS SUBMITTED IN CONFIDENCE. ALL RIGHTS RESERVED. COPYING OR IMITATION EXPRESSLY PROHIBITED. ALL OR PORTIONS OF THIS DESIGN MAY BE SUBJECT TO PROPRIETARY RIGHTS. DRAWING NOT RELEASED UNTIL DATED AND APP'D BELOW	MATERIAL	1	PAWLING CORP. ENGINEERED PRODUCTS DIVISION	
	PAINT/FINISH		----	TITLE FABRIC REINFORCED PNEUMA-CEL
DATE _____ APVD _____ BREAK ALL SHARP CORNERS 1/32 DO NOT SCALE DRAWING © PAWLING CORP	TOLERANCE UNLESS NOTES FRACTIONS ± 1/32 3 DECIMAL PLACES ± .010 2 DECIMAL PLACES ± .030 ANGLES ± 2°	SCALE 1/1 & NOTED	DR. 7/13/2009 MJR CHK. _____ APVD. _____	PRS34637 - REV